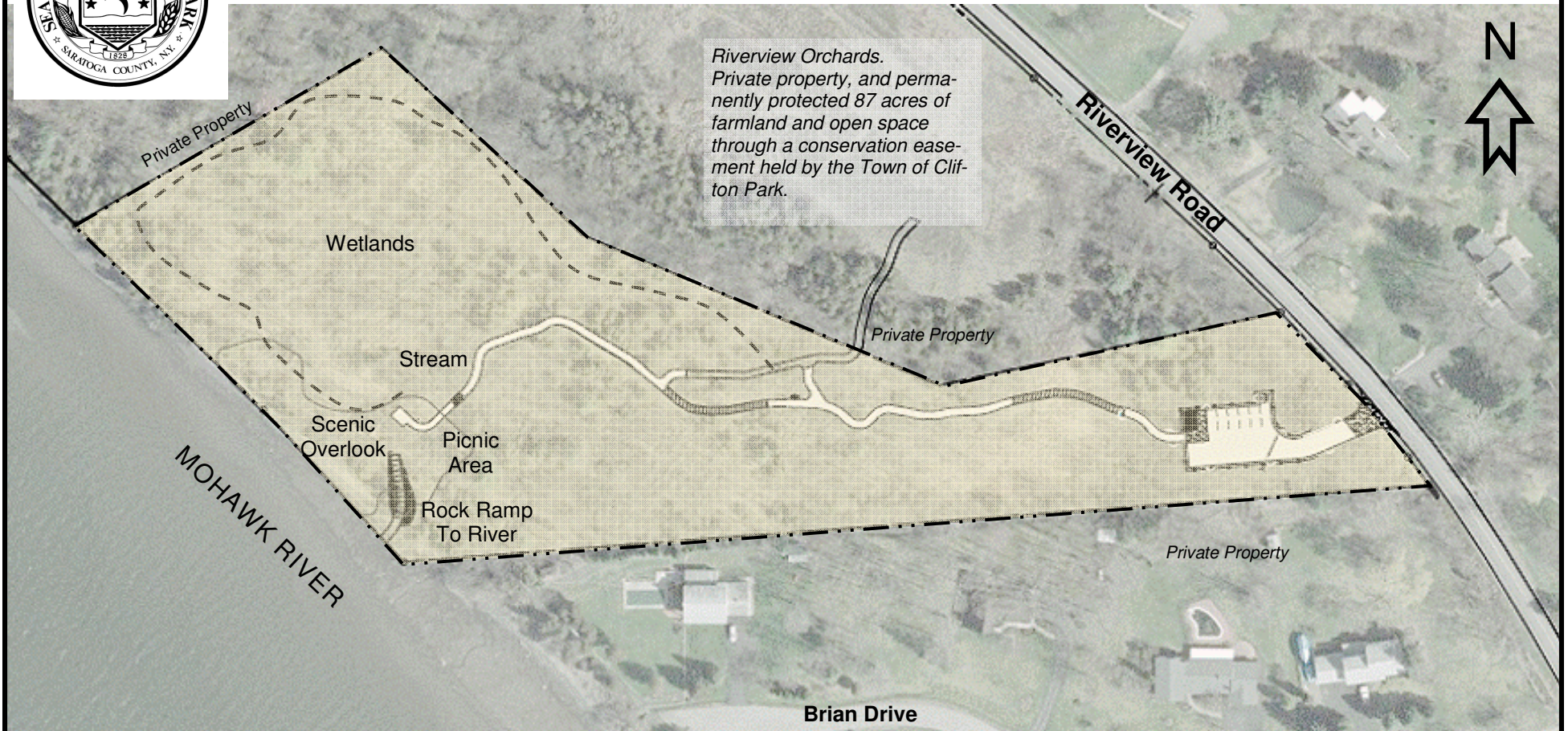




Mohawk Landing Nature Preserve - Trail Map

Town of Clifton Park



Mohawk Landing Nature Preserve Trails Map

This 6-acre public nature preserve offers relaxed walking along a gentle path to arrive at a sweeping view overlooking the Mohawk River from along the cliffs of Clifton Park. The entire trail system is about one-quarter mile. The parking lot to the picnic area / Scenic Overlook is about 800 feet.

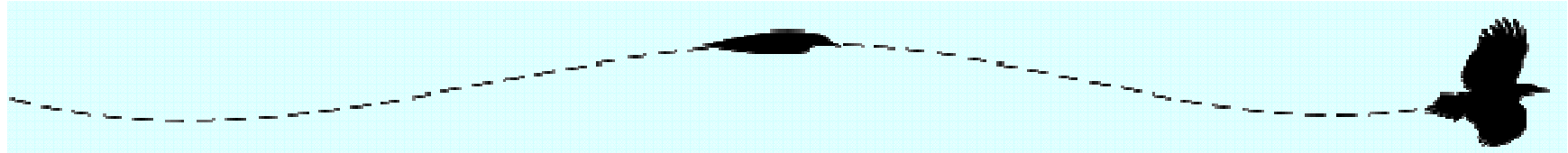


Trout lily, 5/2/14

Map Legend

- Stone dust gravel trail, with boardwalks
- Seasonal, natural surface path
- Nature preserve boundaries

Contact: Town of Clifton Park, One Town Hall Plaza, Clifton Park, NY 12065 (518) 371-6054, www.cliftonpark.org, planning@cliftonpark.org



Mohawk Landing Nature Preserve

Riverview Road, Town of Clifton Park

NATURE PRESERVE FEATURES: The 6-acre riverfront access area has an 800-foot accessible gravel and boardwalk nature trail leading to a Mohawk River overlook and small picnic spot. A rock ramp enables kayak and canoe launching from shore. A dirt and mulch footpath loops around a wetlands area. The preserve is buffered to the north by 87 acres of permanently protected farmland and open space operated by Riverview Orchards. The Town of Clifton Park holds the conservation easement.

TRAILS: Nearly 1/4 miles of trails – some gravel-surfaced with wooden boardwalks, others hard-packed dirt & mulch – meander through wetlands and open woods. Picnic tables placed seasonally at the scenic overlook at top of the bank overlooking the Mohawk River provide intriguing places to rest.

WATER TRAIL: This site offers a rock ramp down to natural shoreline for launching or landing kayaks, canoes, paddleboards or other hand-powered boats on the Mohawk River. **Cautionary note:** invasive aquatic water chestnut can be an impediment to river access in mid- to late-summer. River levels are also subject to change throughout the year.

WHEN TO VISIT: Dawn to Dusk, Year-Round.

DIRECTIONS: Located directly off of Riverview Road west of Brian Drive, and east of Riverview Orchards. Web-site map search: Use “Mohawk Landing Nature Preserve, Riverview Road, Rexford, NY 12148”.

HIGHLIGHTS: This place is along the 26-mile Mohawk Towpath National Scenic Byway. A mobile phone app is available about the Byway. Look for the cell phone audio tour signs at points along Riverview Road and the Byway. You may also dial 518-649-9990 and follow the prompts.

WILDFLOWER FIELD GUIDE: is available online at <http://curiousbynature.wordpress.com/wildflower-guides/> featuring Mohawk Landing Nature Preserve, and other area preserves.



INFORMATION: Contact the Town of Clifton Park at 518-371-6651 to report any site conditions or with questions.

www.cliftonpark.org