

Waterford Historical Museum & Cultural Center

Canal Viewing Directions by Car

To get to the old Champlain Canal Lock 4 by car from the museum, you'll need to turn right onto Saratoga Avenue/NYS Rt 32 from Museum Lane. Take a right onto Fulton Street, and then a right once you've reached the end of the road with a Champlain Trail sign.

This will bring you to the Towpath Park area where you may park to view/walk to this lock. You may also walk the Champlain Canal Trail northward to Lock 2.

Purple line in image below = route from Saratoga Avenue to Fulton Street to connect by car to Towpath Park area and old Champlain Canal Lock 4

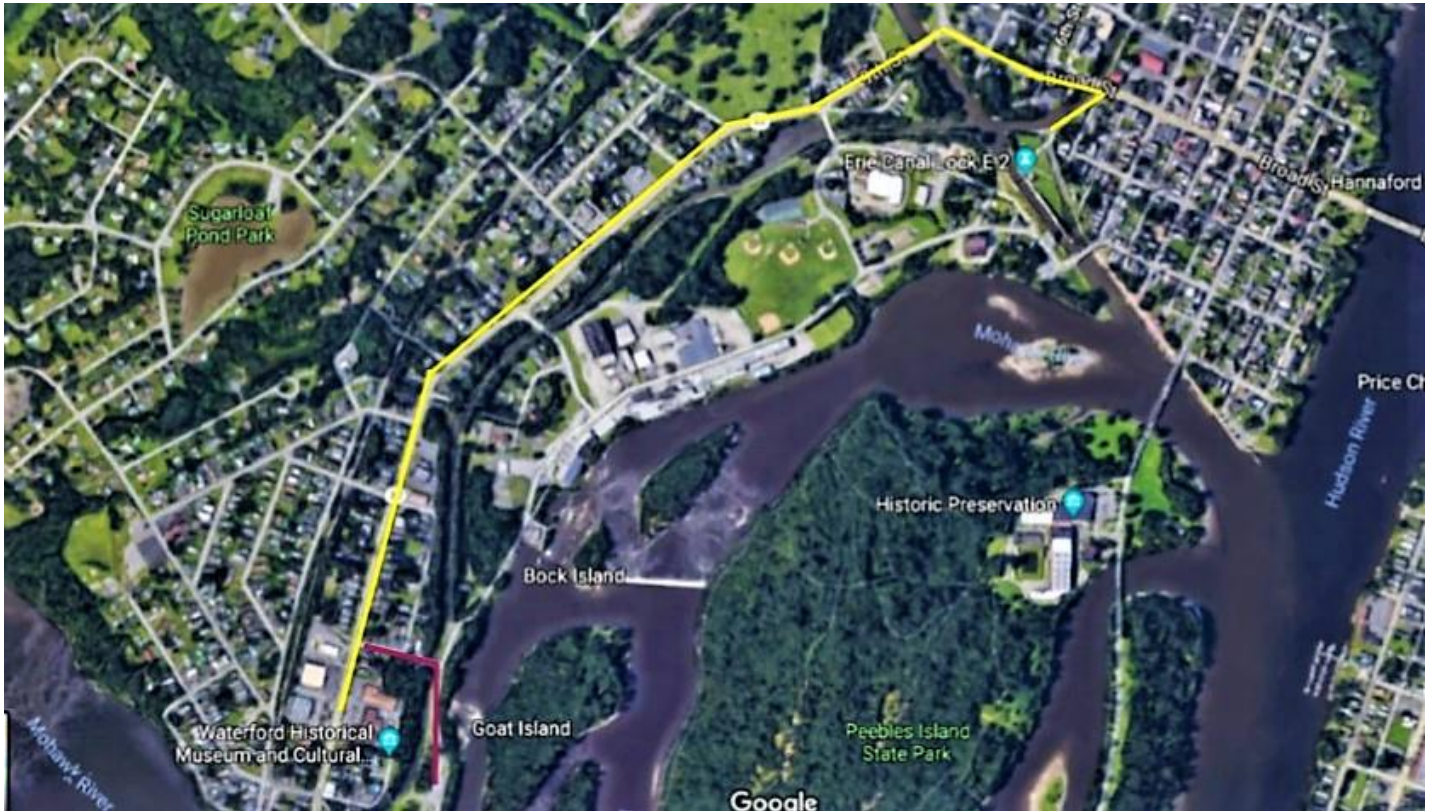


If you'd like to view the Waterford Flight of Locks, you can start by visiting Lock 2 - this is the modern lock which is over by the Visitor's Center, the brick building directly on the waterfront.

The Visitor Center closes with the canal in mid to late October.

Visitors to the canals will not be able to view the locks in operation after October.

To get to Lock 2 from the museum yellow = directly to Lock 2 from Museum
purple = to Champlain Canal Lock 4.



Enter back onto Saratoga Avenue/NYS Rt 32 by taking a right from Museum Lane and follow the road onto 9th street. You will cross over a bridge with Lock 3 to your left. Take a slight right turn following the road onto **Broad Street**.

Continue straight and cross the Broad Street bridge by St. Mary's Church (gray building). **Take the immediate sharp right turn onto Short 5th Street** - not to be confused with the residential 5th street that is a dead end road. There is no access from 5th Street aside from a walking path and there is no option of public parking. Vehicles may be fined/towed if you park in front of residences. If you accidentally take 5th Street, proceed left onto Middle Street, and then another Left onto Fourth Street to return to Broad Street. Short 5th Street will be on your left.

There will be a green sign that says Erie Canal Lock 2 and this road will lead you to a park area where you can view Lock 2, Waterford Harbor, the old Champlain Canal route*, and the old Champlain Canal Side Cut Locks from the 1820s that are in use today as a spillway.

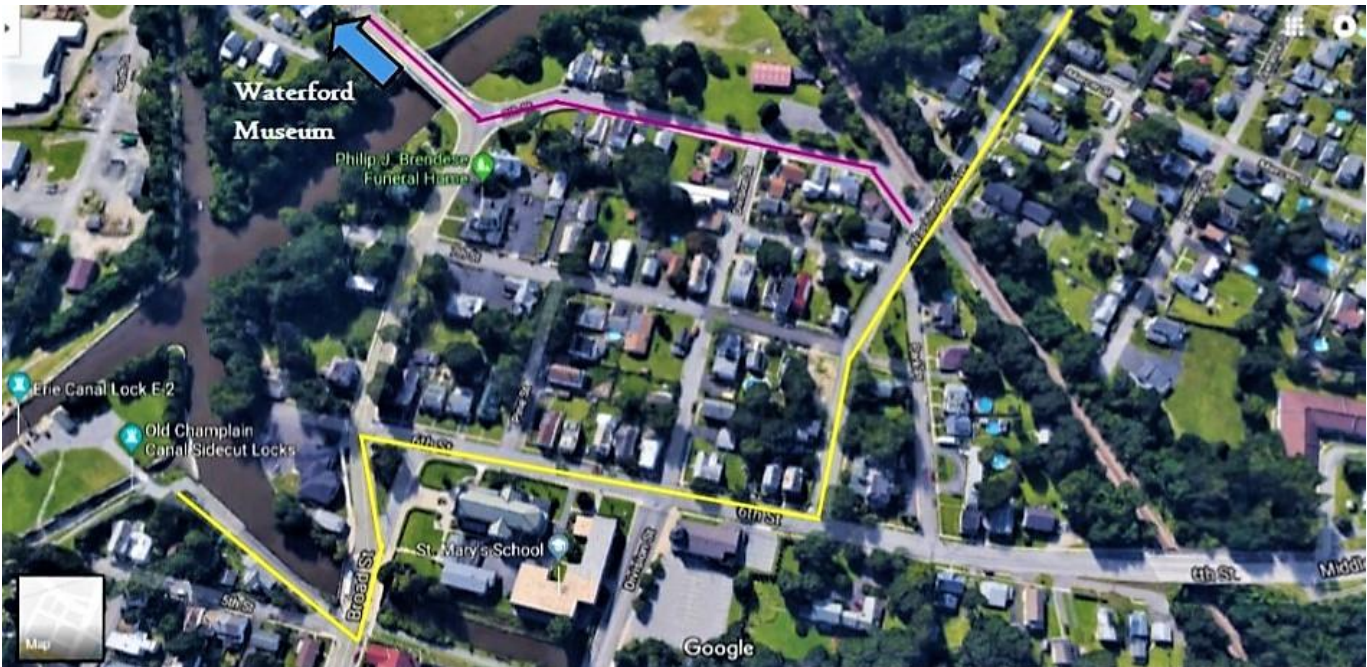
You may also find alternative parking by continuing further onto Broad Street and taking a right onto 4th Street. Cross the bridge over the entrance to Lock 2. There will be ample parking available on the other side of the bridge. To access the Lock and park area, you will need to climb the lock stairs. There is no handicap ramp with this option.

**You can walk to the museum from the Champlain Trail, heading north or south. You can head south to view the old Champlain Canal Lock 4. There are stairs which lead up the hill to the Waterford Historical Museum and Cultural Center (no ramp). It is around a 30-40 minute walk.*

Image to highlight where short 5th street is located beside Broad Street bridge.



To view the rest of the Waterford Flight, return back to Broad Street and take a left turn. At the light at the intersection with 6th Street, take a right turn onto 6th Street (you will pass St. Mary's on your right). Turn left onto Washington Avenue, 3rd street down. Follow this road, which will become Fonda Road. There is a State Marker which reads, "FONDA MILITARY ROAD".



Yellow = to Locks 4, 5 & 6 of Waterford Flight directly from Lock 2

Purple = directly from Saratoga Avenue/NYS Rt 32 when leaving the museum, skipping Lock 2

Take a very slight left turn from Fonda Road onto Flightlock Road. This road will pass Lock 4, Lock 5, and Lock 6. Locks 5 and 6 have a good size parking area and space to move around beside the locks.

If you follow Flightlock Road all the way to its end, you'll be able to pass the Guard Gate beyond Lock 6 and will reach the boat launch onto the Mohawk River.

You may turn around in the parking lot of the boat launch area, and return along Flightlock Road. There are parking lots at each lock for locks 2, 4, 5 & 6 for visitors to be able to get closer to the lock and potentially move around the area.



IMPORTANT REMINDERS

Bathrooms

There are **no restrooms at the lock park areas** available for public use during either the open canal season or the off season. It is recommended that you make use of the facilities available at the Visitors' Center.

There are **no restrooms at the boat launch on the Mohawk River** at the top of the Waterford Flight of Locks.

The Visitor's Center - *when closed for the canal season October to May* - also closes off public restroom access. It is otherwise available for public use.

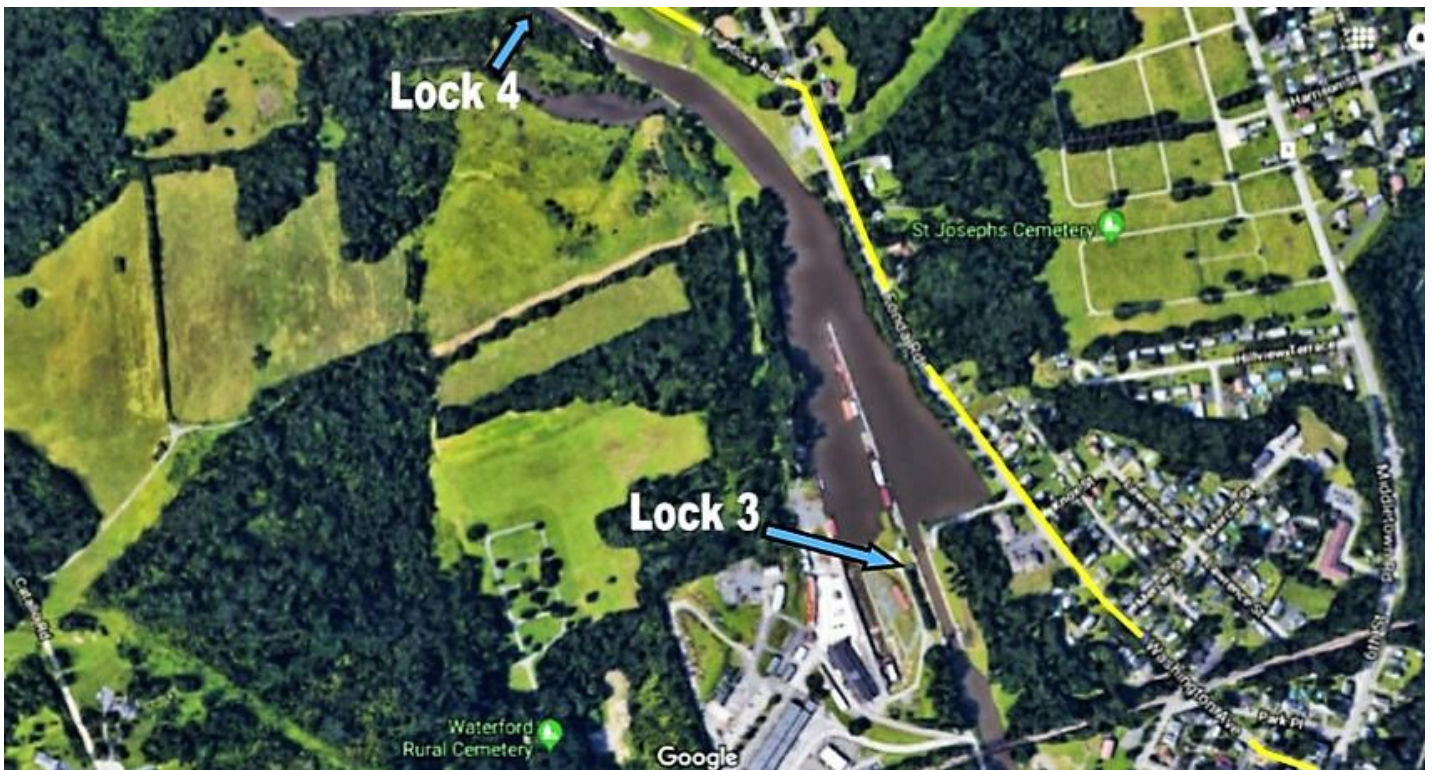
Carry-It-In, Carry-it-Out

These park areas are “Carry-It-In, Carry-It-Out” and therefore **do not have any trash receptacles on site for you**. There are some picnic tables only, which are on site for use. Thank you for your understanding.

What About Visiting Lock 3?

You most likely have noticed that Lock 3 is on this map, but not included in the directions for viewing the Flight of Five Locks.

While it is definitely in the flight, it is not included because there is ***no opportunity for visitors to get an up-close view of the lock. It is used by NYS Canal Corporation as maintenance offices/dry dock and it is fenced in with no public access.***



You may "visit" Lock 3 by parking in the lot off 9th street, just before the bridge crossing over the canal - there is a buoy tender displayed there (as of 2018). You may be able to glimpse it as you pass by on Washington Avenue as well.